

# Small Project Express

The Essential Guide of Distribution and Controls

---

Need equipment for your project right away?

We've got the goods to go.

In Stock at **Nedco** or the most expensive item on your order is **FREE**.  
See page 3 for full details.



**Schneider**  
Electric

# Small Project Express

---

This guide contains the essential products that are available from our distributor inventory for your small project needs. Need equipment for your project right away? We've got the goods to go!

The Small Project Express program has been designed to meet the needs of electrical contractors that require express quotes and express deliveries. As a participant of the Schneider Electric Small Project Express program, we have the expertise to meet all of your small project needs starting from the take-off, fast and accurate quotes, shop drawings and express deliveries.

## Common Products that are Normally in Stock



Safety Switches



Ready to install panelboards  
and circuit breakers



Loadcentres

This guide was designed to make product selection easy. To suite your small project needs, we have assembled for you the most popular items that are normally required for the job, from electrical distribution to motor control.

If you require products that are not listed in this guide, simply ask us, we have the goods to go!

## THE NEDCO PROMISE & TERMS AND CONDITIONS

The Schneider items listed in this SPE/NEDCO Catalog are guaranteed to be in stock at NEDCO when the customer places their order. Otherwise the most expensive item on the SPE is Free.

- The most expensive item on the incomplete order must not exceed \$500.
- Only one free item will be credited on the order per missing SKU.  
(example: 10 missing items at \$100 does not give a \$1000 credit but a \$100 credit)
- One incomplete order per customer per day. By an incomplete order, we mean an order including a Schneider item listed in this SPE/Nedco catalog but that the Nedco branch does not have in stock on the day (or the next day) of the order.
- If an item cannot be delivered due to supply problems from Schneider and out of Nedco's control (ie. out of stock), the promise cannot be applied.
- The promise applies only on projects totaling \$5000 or less.
- In order to meet the Nedco promise, the customer must place their order before 3pm the same day.
- Nedco has until the next day to deliver the ordered material from the SPE/Nedco catalog
- Nedco gives itself the right to end the promotion without notice.



# QO 1-Phase Loadcentres 120/240V

## Main lugs, 1 phase

Catalogue No.	Circuits		Amps
	Standard QO	Tandem QO	
QO2L70S	2	4	70
QO4L100S	4	8	100
QO6L100S	6	12	100
QO8L100S	8	15	100
CQO112L100GC	12	24	100
CQO116L100GC	16	32	100
CQO124L125GCPON	24	47	125

## Main Lugs 200 amps, 1 phase

Catalogue No.	Circuits		Amps
	Standard QO	Tandem QO	
CQO140L200GC	40	80	200

## Main Breaker, 1 phase

Catalogue No.	Circuits		Amps
	Standard QO	Tandem QO	
CQO112M100C60	12	24	60
CQO116M100C100	16	32	100
CQO124M125C100PON	24	47	100
CQO132M125C100	32	54	100
CQO140M125C125	40	54	125
CQO140M125C100	40	54	100
CQO140M150C	40	80	150
CQO140M200C	40	80	200
CQO160M200C	60	80	200

# QO Loadcentres Type 3R Weatherproof

## Main lugs, 1 phase

Catalogue No.	Circuits		Amps
	Standard QO	Tandem QO	
QO2L70RB	2	4	70
QO6L100RB	6	12	100
QO8L100RB	8	15	100
CQO124L125GRB	24	48	125

## Main lugs, 3 phase

Catalogue No.	Circuits		Amps
	Standard QO	Tandem QO	
QO403L100RB	3	N/A	100

## Main Breaker, 1 phase

Catalogue No.	Circuits		Amps
	Standard QO	Tandem QO	
CQO116M100RB100	16	32	100
CQO124M125RB100PON	24	47	100

# QO 3-Phase Loadcentres 120/208V

Ideal for light duty commercial/ industrial applications.

## Main Lugs, 3 phase

Catalogue No.	Trim	Circuits		Amps
		Standard QO	Tandem QO	
QO403L100S	Included	3	N/A	100 A
QO312ML1	QOC16UC	12	24	125A
QO320ML1	QOC24UC	20	40	125A
QO324ML2	QOC30UC	24	48	200A
QO330ML2	QOC30UC	30	60	200A
QO342ML2	QOC42UC	42	60	225A



## Main Breaker, 3 phase

Catalogue No.	Trim	Circuits		Amps
		Standard QO	Tandem QO	
QO324MB100	QOC30UC	24	30	100A
QO342MQB200	QOC342UQC	42	60	200A

# QO Loadcentre Branch Breakers 10 KA

## Standard Branch Breakers

Catalogue No.	Amps/Poles	Catalogue No.	Amps/Poles
QO115	15A-1P	QO315	15A-3P
QO120	20A-1P	QO320	20A-3P
QO215	15A-2P	QO330	30A-3P
QO220	20A-2P	QO340	40A-3P
QO225	25A-2P	QO350	50A-3P
QO230	30A-2P	QO360	60A-3P
QO240	40A-2P	QO370	70A-3P
QO250	50A-2P	QO3100	100A-3P
QO260	60A-2P		
QO270	70A-2P		
QO2100	100A-2P		
QO2125	125A-2P		
QO2150	150A-2P		



## Tandem Branch Breakers\*

Catalogue No.	Amps
QO1515	15 & 15
QO1520	15 & 20
QO1530	15 & 30
QO2015	20 & 15
QO2020	20 & 20
QO2030	20 & 30
QO3015	30 & 15



\* Two single pole individual trip - 120/240 Vac applications order two QO1515 or QO2020 circuit breakers and handle tie catalogue #QOTHT.

# QO Loadcentre Branch Breakers 10 KA

## Combination Arc Fault Circuit Breakers

Catalogue No.	Amps
QO115CAFI	15A-1P
QO120CAFI	20A-1P

## Ground Fault Interrupters

Catalogue No.	Amps
QO115GFI	15A-1P
QO120GFI	20A-1P
QO130GFI	30A-1P
QO215GFI	15A-2P
QO220GFI	20A-2P
QO230GFI	30A-2P
QO240GFI	40A-2P
QO250GFI	50A-2P

# QO Loadcentre Accessories

## Accessories

Catalogue No.	Description
QOFP	Filler Plate
QO1PA	Handle Padlock
QO1LO	Handle Lock-off
LK100AN*	Neutral Lug - #6 to 2/0 Al/Cu

\* LK100AN is provided with QO2100 breakers.



# Homeline 1-Phase Loadcentres 120/240V

## Main lugs, 1 phase

Catalogue No.	Branch Space	Branch Circuits*	Amps
CHOM48L125GC	4	8	125
CHOM612L100S	6	12	100
CHOM816L125GC	8	16	125
CHOM1224L125GC	12	24	125
CHOM1632L125GC	16	32	125
CHOM2448L125GC	24	48	125



## Main Breaker, 1 phase

Catalogue No.	Branch Space	Branch Circuits*	Amps
CHOM1224M100GC	12	24	100
CHOM1632M100GC	16	32	100
CHOM2448M100GC	24	48	100
CHOM3060M100GC	30	60	100
CHOM1632M125GC	16	32	125
CHOM2040M150GC	20	40	150
CHOM3060M150GC	30	60	150
CHOM3060M200GC	30	60	200
CHOM4284M200GC	42	84	200
CHOM60120M200GC	60	120	200



\* with CHOMT tandem & quad circuit breakers

# Homeline Loadcentre Branch Breakers 10 KA

## Standard Branch Breakers

Standard 1"	Amps/Poles	Tandems & Quads	Amps/Poles	
CHOM115	15A-1P	CHOMT1515	15A-15A	T
CHOM120	20A-1P	CHOMT1520	15A-20A	T
CHOM125	25A-1P	CHOMT2020	20A-20A	T
CHOM130	30A-1P	CHOMT3020	30A-20A	T
		CHOMT1515215	15A-15A-2P 15A	Q
CHOM215	15A-2P	CHOMT1515220	15A-15A-2P 20A	Q
CHOM220	20A-2P	CHOMT1515225	15A-15A-2P 25A	Q
CHOM225	25A-2P	CHOMT1515230	15A-15A-2P 30A	Q
CHOM230	30A-2P	CHOMT1515240	15A-15A-2P 40A	Q
CHOM240	40A-2P	CHOMT1515250	15A-15A-2P 50A	Q
CHOM250	50A-2P	CHOMT2020220	20A-20A-2P20A	Q
CHOM260	60A-2P			
CHOM270	70A-2P	CHOMT2020230	20A-20A-2P30A	Q
CHOM2100	100A-2P	CHOMT2020240	20A-20A-2P40A	Q
CHOM2125	125A-2P			
CHOM2150BB	150A-2P			

\* Note: T indicates Tandem; Q indicates Quad

## Plug-on Neutral Combination Arc Fault Circuit Breakers

Catalogue No.	Description
CHOM115PCAFI	15A-1P
CHOM120PCAFI	20A-1P

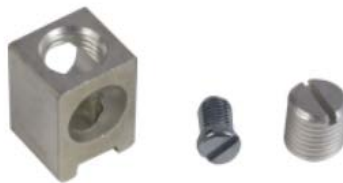
## Ground Fault Interrupters

Catalogue No.	Description
CHOM115GFI	15A-1P
CHOM120GFI	20A-1P
CHOM215GFI	15A-2P
CHOM220GFI	20A-2P
CHOM230GFI	30A-2P
CHOM240GFI	40A-2P
CHOM250GFI	50A-2P

# Homeline Loadcentre Accessories

## Accessories

Catalogue No.	Description
HOMFP	Filler Plate
HOM1PA	Handle Padlock
QO1LO	Handle Lock-off
LK100AN	Neutral Lug - #6 to 2/0 Al/Cu



# Safety Switches

**Industry leading performance, quality and reliability**

## General Duty

### Fusible, 2 Pole, c/w Solid Neutral, NEMA 1

Catalogue No.	Size	Voltage
CD211N	30A	120/240 Vac fuse plugs
CD221N	30A	120/240 Vac
CD222N	60A	120/240 Vac
CD223N	100A	120/240 Vac
CD224N	200A	120/240 Vac
CD225N	400A	120/240 Vac
CD226N	600A	120/240 Vac



### Fusible, 3 Pole, c/w Solid Neutral, NEMA 1

Catalogue No.	Size	Voltage
CD321N	30A	120/240 Vac
CD322N	60A	120/240 Vac
CD323N	100A	120/240 Vac
CD324N	200A	120/240 Vac
CD325N	400A	120/240 Vac
CD326N	600A	120/240 Vac

### Fusible, 3 Pole, c/w Solid Neutral, NEMA 1

Catalogue No.	Size	Voltage
CH321N	30A	240Vac/250Vdc
CH322N	60A	240Vac/250Vdc
CH323N	100A	240Vac/250Vdc
CH324N	200A	240Vac/250Vdc
CH325N	400A	240Vac/250 Vdc



# Safety Switches, Heavy Duty, 600V

**Industry leading performance, quality and reliability**

## **Fusible, 3 Pole, NEMA 1**

Catalogue No.	Size	Voltage
CH361	30A	600V
CH362	60A	600V
CH363	100A	600V
CH364	200A	600V
CH365	400A	600V
CH366	600A	600V



## **Non Fusible, 3 Pole, NEMA 1**

Catalogue No.	Size	Voltage
CHU361	30A	600V
CHU362	60A	600V
CHU363	100A	600V
CHU364	200A	600V
CHU365	400A	600V
CHU366	600A	600V



## **Non Fusible, 3 Pole, NEMA 3R**

Catalogue No.	Size	Voltage
CHU361RB	30A	600V
CHU362RB	60A	600V
CHU363RB	100A	600V



# Safety Switches, Heavy Duty, 600V

## Industry leading performance, quality and reliability

### Fusible, 3 Pole, NEMA 3R/12

Catalogue No.	Size	Voltage
CH361AWK	30A	600V
CH362AWK	60A	600V
CH363AWK	100A	600V
CH364AWK	200A	600V
CH365AWK	400A	600V

### Non-Fusible, 3 Pole, NEMA 3R/12

Catalogue No.	Size	Voltage
CHU361AWK	30A	600V
CHU362AWK	60A	600V
CHU363AWK	100A	600V
CHU364AWK	200A	600V
CHU365AWK	400A	600V

### Solid Neutral

Size	Solid Neutral
30 amps	CSN03
60 amps	CSN0610
100 amps	CSN0610
200 amps	CSN20
400 amps	CH600SN

### Electrical Interlock

Size	1-no 1-nc	2-no 2-nc
30 amps	EIK031	EIK032
60 amps	EIK1	EIK2
100 amps	EIK1	EIK2
200 amps	EIK1	EIK2
400 amps		EIK40602
600 amps		EIK40602

### Elevator Rated Electrical Interlock



Size	Cat#	1-no 1-nc
30 amps	CH361	EIK031EV
60 amps	CH362	EIK06101EV
100 amps	CH363	EIK06101EV

# Motor Disconnect and HVAC Switches

## Non Fusible Disconnect for H.V.A.C. application

Catalogue No.	Nema	Amps	Voltage
RCD5336	3R	30A	600V
RCD5636	3R	60A	600V

## Non Fusible Disconnect for H.V.A.C. application

Catalogue No.	Nema	Amps	HP	Voltage
MD3304X	4X	30A	25 HP	600V
MD3604X	4X	60A	40HP	600V



## Non Fusible Motor Disconnect

Catalogue No.	Nema	Amps	HP	Voltage
MD3304X	4X	30A	25 HP	600V
MD3604X	4X	60A	40HP	600V



## Non Fusible Motor Disconnect Accessories

Catalogue No.	Description
MDSAN11	1 normally open + 1 normally closed auxiliary contact model

# Safety Switches, Double Throw

**Industry leading performance, quality and reliability**

## **Non-Fusible, 600 Volts, 3 Pole, NEMA 1**

Catalogue No.	Amps	Voltage
DTU361	30A	600V
DTU362	60A	600V
DTU363	100A	600V
C82344*	200A	600V

\* For Isolation use only.



## **Non Fusible, 600 Volts, 3 Pole, NEMA 3R**

Catalogue No.	Amps	Voltage
C82344RB*	200A	600V

\* For Isolation use only.



# NQ Panelboards, 240V, Main Lugs



Developed with electrical contractor input, the NQ family of lighting and appliance panelboards sets new standards for ease of installation and durability. Plus, new design innovations increase the availability of these panelboards by offering complete ready to install products.

#### Key Features:

- Subfeed circuit breakers are vertically mounted
- Visi-Trip® indication on QO/QOB circuit breakers
- 20" wide trims and boxes common for NF and NQ panelboards
- "Ready-to-Install" panels and kits available from stock
- Interiors are available in plated copper or aluminum bus
- Interiors accept both bolt-on (QOB) and plug-on (QO) branch circuit breakers

## 225A, 1 Phase, 120/240V, Aluminum

Circuits	Interior	Box	Surface	Flush	Nema 3R/12 Enclosure
30	NQ30L2	MH32	NC32S	NC32F	MH32WP
42	NQ42L2	MH38	NC38S	NC38F	MH38WP
72	NQ72L2	MH44	NC44S	NC44F	MH44WP
84	NQ84L2	MH50	NC50S	NC50F	MH50WP

## 400A, 1 Phase, 120/240V, Aluminum

Circuits	Interior	Box	Surface	Flush	Nema 3R/12 Enclosure
30	NQ30L4	MH50	NC50VS	NC50VF	MH50WP
42	NQ42L4	MH50	NC50VS	NC50VF	MH50WP
84	NQ84L4C	MH68	NC68VS	NC68VF	

# NQ Panel boards, 240V, Main Lugs

## 100A, 3 Phase, 120/208V, Aluminum

Circuits	Interior	Box	Surface	Flush	Nema 3R/12 Enclosure
18	NQ418L1	MH26	NC26S	NC26F	MH26WP
30	NQ430L1	MH32	NC32S	NC32F	MH32WP

## 225A, 3 Phase, 120/208V, Aluminum

Circuits	Interior	Box	Surface	Flush	Nema 3R/12 Enclosure
30	NQ430L2	MH32	NC32S	NC32F	MH32WP
42	NQ442L2	MH38	NC38S	NC38F	MH38WP
72	NQ472L2	MH44	NC44S	NC44F	MH44WP
84	NQ484L2	MH50	NC50S	NC50F	MH50WP

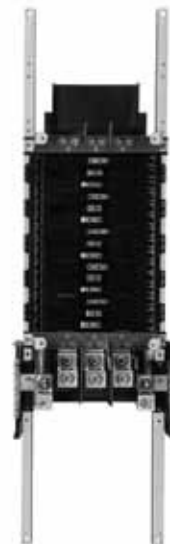
## 400A, 3 Phase, 120/208V, Aluminum

Circuits	Interior	Box	Surface	Flush	Nema 3R/12 Enclosure
30	NQ430L4	MH50	NC50VS	NC50VF	MH50WP
42	NQ442L4	MH50	NC50VS	NC50VF	MH50WP
72	NQ472L4	MH62	NC62VS	NC62VF	MH62WP
84	NQ484L4C	MH68	NC68VS	NC68VF	MH68WP

## Accessories

Catalogue No.	Description
PK27GTA	Ground Bar
PKGTAB	Isolated Ground
MHT2DH20	Drip Hood

1- PK27GTA for panels up to 42 circuits; 2- PK27GTA for 72 and 84 circuit panels.



# NQ Panelboards, 240V, Main Breaker

## 225A, 1 Phase, 120/240V, Aluminum, 10KA MB

Circuits	Interior	Box	MBKIT	200A MB	Surface	Flush	Nema 3R/12 Enclosure
30	NQ30L2	MH44	NQMB2Q	QBL22200	NC44S	NC44F	MH44WP
42	NQ42L2	MH50	NQMB2Q	QBL22200	NC50S	NC50F	MH50WP
72	NQ72L2	MH56	NQMB2Q	QBL22200	NC56S	NC56F	
84	NQ84L2	MH62	NQMB2Q	QBL22200	NC62S	NC62G	

## 400A, 1 Phase, 120/240V, Aluminum, 42KA MB

Circuits	Interior	Box	MBKIT	400A MB	Surface	Flush
30	NQ30L4	MH62	NQMB4LA	LAL26400MB	NC62VS	NC62VF
42	NQ42L4	MH62	NQMB4LA	LAL26400MB	NC62VS	NC62VF
84	NQ84L4C	MH80	NQMB4LA	LAL26400MB	NC80VS	

## 225A, 3 Phase, 120/208V, Aluminum, 10KA MB

Circuits	Interior	Box	MBKIT	200A MB	Surface	Flush	Nema 3R/12 Enclosure
30	NQ430L2	MH44	NQMB2Q	QBL32200	NC44S	NC44F	MH44WP
42	NQ442L2	MH50	NQMB2Q	QBL32200	NC50S	NC50F	MH50WP
72	NQ472L2	MH56	NQMB2Q	QBL32200	NC56S	NC56F	
84	NQ484L2	MH62	NQMB2Q	QBL32200	NC62S	NC62F	

## 400A, 3 Phase, 120/208V, Aluminum, 42KA MB

Circuits	Interior	Box	MBKIT	400A MB	Surface	Flush
30	NQ430L4	MH62	NQMB4LA	LAL36400MB	NC62VS	NC62VF
42	NQ442L4	MH62	NQMB4LA	LAL36400MB	NC62VS	NC62VF
72	NQ472L4	MH74	NQMB4LA	LAL36400MB	NC74VS	NC74VF
84	NQ484L4C	MH80	NQMB4LA	LAL36400MB	NC80VS	

# NQ Panelboards, Branch Circuit Breakers

## Branch Breakers, NQ Panelboards, 240V, 10KA

Amps	1 Pole	2 Pole	3 Pole
15	QOB115	QOB215	QOB315
20	QOB120	QOB220	QOB320
25	QOB125	QOB225	QOB325
30	QOB130	QOB230	QOB330
40	QOB140	QOB240	QOB340
50	QOB150	QOB250	QOB350
60		QOB260	QOB360
70		QOB270	QOB370
80			QOB380
100		QOB2100	QOB3100
125		QOB2125	



## Branch Circuit Breakers, NQ Panelboards, 240V, 22KA

Amps	1 Pole	2 Pole	3 Pole
125		QOB2125VH	QOB3125VH
150		QOB2150VH	QOB3150VH

## Accessories

<b>Padlock</b>
QO1PA

<b>Filler Plate</b>
NQFP15



# NF Panelboards, 347/600V, Main Lugs



The NF panelboard offers superior performance and application flexibility for commercial and industrial systems up to 347V/600Y Vac. This versatile lighting and power distribution panelboard features a wide selection of circuit breakers, accessories and ready-to-install kits, as well as 200% rated neutrals for non-linear loads.

#### Key Features:

- Subfeed circuit breakers are vertically mounted
- Visi-Trip® indication on EDB/EGB circuit breakers
- 20" wide trims and boxes common for NF and NQ panelboards
- Branch circuit filler plats provide fast and easy installation
- "Ready-to-install" panels and kits available from stock

## 125A, 3 Phase, 347/600V, Aluminum

Circuits	Interior	Box	Surface	Flush	Nema 3R/12 Enclosure
18	NF418L1	MH26	NC26S	NC26F	MH26WP
30	NF430L1	MH32	NC32S	NC32F	MH32WP

## 250A, 3 Phase, 347/600V, Aluminum

Circuits	Interior	Box	Surface	Flush	Nema 3R/12 Enclosure
30	NF430L2	MH38	NC38S	NC38F	MH38WP
42	NF442L2	MH44	NC44S	NC44F	MH44WP
66	NF466L2	MH62	NC62S	NC62F	

## 400A, 3 Phase, 347/600V, Aluminum

Circuits	Interior	Box	Surface	Flush	Nema 3R/12 Enclosure
30	NF430L4	MH50	NC50VS	NC50VF	MH50WP
42	NF442L4	MH56	NC56VS	NC56VF	
66	NF466L4	MH74	NC74VS	NC74VF	
84	NF484L4	MH86	NC86VS	NC86VF	

For copper main bus add the letter "C" to the Interior catalogue number.

# NF Panelboards, 347/600V, Main Breaker

## 125A, 3 Phase, 347/600V, Aluminum, 14KA MB

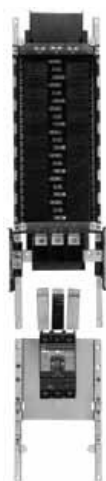
Circuits	Interior	Box	MB KIT	125A MB	Surface	Flush	Nema 3R/12 Enclosure
18	NF418L1	MH38	N150MH	HDL36125	NC38S	NC38F	MH38WP
30	NF430L1	MH44	N150MH	HDL36125	NC44S	NC44F	MH44WP

## 250A, 3 Phase, 347/600V, Aluminum, 14KA MB

Circuits	Interior	Box	MB KIT	200A MB	Surface	Flush	Nema 3R/12 Enclosure
30	NF430L2	MH50	N250MJ	JDL36200	NC50S	NC50F	MH50WP
42	NF442L2	MH56	N250MJ	JDL36200	NC56S	NC56F	
66	NF466L2	MH74	N250MJ	JDL36200	NC74S		

## 400A, 3 Phase, 347/600V, Aluminum, 14KA MB

Circuits	Interior	Box	MB KIT	400A MB	Surface	Flush
30	NF430L4	MH62	N400M	LAL36400MB	NC62VS	NC62VF
42	NF442L4	MH68	N400M	LAL36400MB	NC68VS	NC68VF
66	NF466L4	MH86	N400M	LAL36400MB	NC86VS	NC86VF



For copper main bus add the letter "C" to the Interior catalogue number.

# NF Panelboards, Branch Circuit Breakers

## Branch Circuit Breakers, NF Panelboards 347/600V, 14KA

Amps	1 Pole	2 Pole	3 Pole
15	EDB16015	EDB26015	EDB36015
20	EDB16020	EDB26020	EDB36020
30	EDB16030	EDB26030	EDB36030
40	EDB16040	EDB26040	EDB36040
50		EDB26050	EDB36050
60		EDB26060	EDB36060
70		EDB26070	EDB36070
80			EDB36080
90		EDB26090	EDB36090
100		EDB26100	EDB36100



## Accessories

Padlock
HPAFD

Filler Plate
NFFP15



## BRITISH COLUMBIA

### LANGLEY

#101, 20688 Duncan Way  
Langley, BC V3A 7A3  
T (604) 530-0771 F (604) 530-4442  
Manager: Jordi Muckle

### PENTICTON

260 Industrial Avenue E  
Penticton, BC V2A 3H8  
T (250) 492-8365 F (250) 492-5052  
Manager: John Simmonds

### RICHMOND

4455 No 6 Road  
Richmond, BC V6V 1P8  
T (604) 273-2244 F (604) 273-3620  
Manager: Tim Busa

### VERNON

5008 - 24th Street  
Vernon, BC V1T 8X2  
T (250) 545-5391 F (250) 545-2124  
Manager: James Whitelaw

### NANAIMO

2363 Cienar Drive  
Nanaimo, BC V9T 3L6  
T (250) 756-1177 F (250) 756-1119  
Manager: Sue Sharma

### PRINCE GEORGE

3596 Massey Drive  
Prince George, BC V2N 2M4  
T (250) 563-1292 F (250) 563-8279  
Manager: Christopher Andrews

### SURREY

#401 - 13060 80th Avenue  
Surrey, BC V3W 3B2  
T (604) 501-2244 F (604) 501-2766  
Manager: Brian Sidhu

### VICTORIA

3125 Steele Street  
Victoria, BC V8Z 3N7  
T (250) 383-1116 F (250) 388-4946  
Manager: Glen Bourassa

### N. VANCOUVER

1448A Crown Street  
North Vancouver, BC V7J 1G5  
T (604) 985-0466 F (604) 984-0259  
Manager: Ron White

### QUESNEL

1275B Cariboo Hwy 97 North  
Quesnel, BC V2J 2Y3  
T (250) 992-6008 F (250) 992-8110  
Manager: Adam Daly

### VANCOUVER

368 W. 4th Avenue  
Vancouver, BC V5Y 1H3  
T (604) 899-0229 F (604) 899-0250  
Manager: Scott Hides

## ALBERTA

### CALGARY

4324 - 12th Street SE  
Calgary, AB T2G 3H9  
T (403) 508-7999 F (403) 508-7994  
Manager: Alenna Cameron

### RED DEER

#1, 7679 Edgar Industrial Court  
Red Deer, AB T4P 4E2  
T (403) 348-5162 F (403) 348-5093  
Manager: Kent Sewell

### EDMONTON

3915 - 97th Street  
Edmonton, AB T6E 6P6  
T (780) 465-9511 F (780) 466-9226  
Manager: Derek Hiebert

### FORT McMURRAY

17 - 280 Taiganova Crescent  
Fort McMurray, AB T9K 0T4  
T (780) 743-3461 F (780) 791-5652  
Manager: Larry Woolford

## MID-WEST

### WINNIPEG

1313 King Edward Street  
Winnipeg, MB R3H 0R6  
T (204) 694-1313 F (204) 694-8600  
Manager: Peter Reimer

### REGINA

831 MacKay Street  
Regina, SK S4N 2S3  
T (306) 525-2531 F (306) 757-6042  
Manager: Ken Dahms

### SASKATOON

#1, 2301 Faithfull Avenue  
Saskatoon, SK S7K 1T9  
T (306) 653-5020 F (306) 653-0345  
Manager: Vince Deschene

